

WORK WITH RES

RES is keen to work with local suppliers throughout construction and operation of Minnygap Wind Farm.

There are many employment opportunities and opportunities to boost the local economy through wind farm development. These opportunities are not only confined to construction, they also include: telecommunications, welfare facilities and maintenance, cleaning, food provision, lodging, plant hire (small and operated), waste disposal, ecological monitoring, geotechnical assessments, fuel supply and delivery, drinking water supply and delivery, fencing, forestry works, and vehicle maintenance.

If you have a product or service to offer us, please get in touch with us at ruth.highgate@res-ltd.com

RES operates to stringent environmental, safety and quality standards and these form an important part of our contractor selection procedure. We assess compliance with these standards through a pre-qualification questionnaire.



MINNYGAP WIND FARM



Construction Newsletter 1 – October 2015

Welcome to the first in a series of newsletters from RES designed to keep the community informed throughout the construction of Minnygap Wind Farm.

GETTING READY FOR RENEWABLE ENERGY AT MINNYGAP

RES are preparing to start construction at Minnygap Wind Farm. The first part of the works will commence in late October 2015 and will see us upgrading the existing track as well as building new forest track on the Annandale Estate. Construction of the wind farm itself will commence in January 2016 with the wind farm due to be generating clean, green and renewable energy in early 2017. Once complete, the wind farm will produce enough renewable electricity to meet the average annual requirements of around 16000 homes.*



RES has developed more than 1000 MW of wind energy, 2 projects in the UK, including Tallentire Wind Farm in Cumbria

MEET THE TEAM



Ruth Highgate
Community Relations Manager, Scotland
T +44 (0) 141 404 5573
M +44 (0) 07880 357 432
E ruth.highgate@res-ltd.com



James Dominiak
Construction Site Manager
M +44 (0) 774 127 2053
E james.dominiak@res-ltd.com



RES
Third Floor,
STV, Pacific Quay,
Glasgow, G51 1PQ

ABOUT RES

RES, a privately owned British company with a proud history in Scotland, is one of the world's leading renewable energy developers. RES has developed and/or built more than 9,000 MW of renewable energy capacity worldwide.

In the UK alone, RES currently has more than 1,000 MW of wind energy projects either constructed, under construction or consented.

Employing over 100 staff in Scotland, RES has over 30 years' experience of developing, constructing and operating projects of outstanding quality.

KEEPING YOU INFORMED

We have developed a construction plan and central to this is the commitment to minimising any impact on our neighbours whilst ensuring work can be carried out safely. Key to this is keeping you informed so that you know what to expect and when. This newsletter will provide an initial overview of works and we will continue to keep you informed through:

- The project website www.minnygap-windfarm.co.uk
- Your local community representatives
- Updates in local media
- Writing to you directly
- The dedicated Community Relations Manager - please find details on the back page.

*The homes equivalent has been calculated by taking the predicted annual electricity generation of the site (based on RES studies Minnygap has a predicted capacity factor of 32%) and dividing this by the annual average electricity consumption figures from the Department of Energy and Climate Change 2010 (4370kWh)

KEY FACTS



Minnygap,
Dumfries
& Galloway

10 turbines
25 MW (megawatt)



125m to tip of
the blade



Over £3 million
community benefit
package



If you require information in Braille, large text or audio, please let us know.
For those receiving this newsletter by post, we obtained your address through a national postcode database.
If you do not wish to receive more information from us about Minnygap Wind Farm, please tell us by writing to Minnygap Wind Farm, RES, Third Floor, STV, Pacific Quay, Glasgow, G51 1PQ

BUILDING MINNYGAP WIND FARM COMMENCING ENABLING WORKS FOR CONSTRUCTION

The site will be accessed from the A701 directly on to the Annandale Estate forest track.

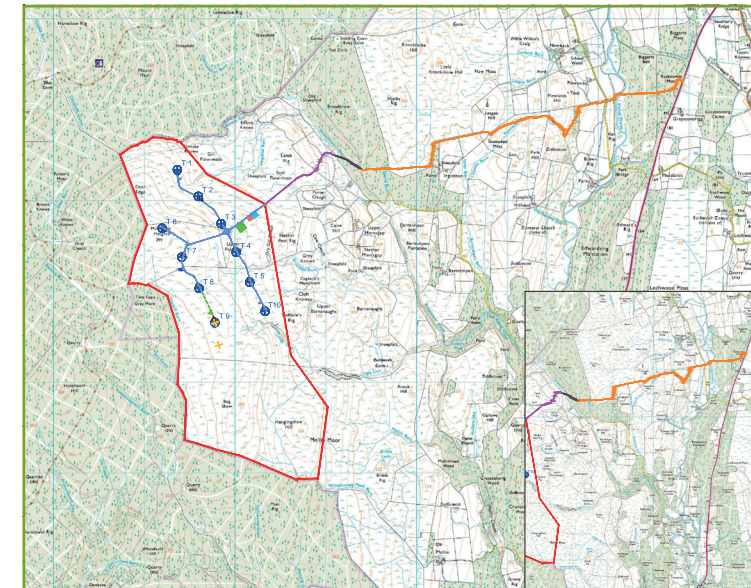
From late October until December 2015 work will take place to upgrade and widen approximately 4.5km of existing forest track on the Annandale Estate. We will also be undertaking a small amount of forestry works which will see a section of forestry felled and replanted elsewhere on the estate. To create the new site track and to facilitate the existing track widening, a limited amount of additional stone will be brought on to site. During the enabling works phase there will be vehicle movements with staff entering and exiting the site and other small scale deliveries. Further details with regard to traffic movements during the main site construction phase (January 2016 onwards) will be communicated nearer to the time.

The improvement of the Annandale Estate forest track will also necessitate the upgrading of an existing bridge. The majority of stone to be used in construction will come from borrow pits on site. This supply will be augmented with some stone from local quarries particularly through the enabling works phase. The Annandale Estate forest road intersects both a public right of way and a minor local road (U313a). Temporary signage has been agreed with the relevant statutory authorities for the duration of the works to allow safe movement of the general public.

Following the completion of the enabling works by the end of 2015, construction of the main wind farm site will commence in January 2016. Prior to the main site construction starting, RES will send out further details to advise of planned traffic movements – as per the detailed traffic plan produced in agreement with Dumfries & Galloway Council.



Hill of Towie Wind Farm in Moray



SITE LAYOUT

KEY

-  **TURBINE LOCATIONS**
-  **SITE BOUNDARY**
-  **SITE ACCESS ROUTE**
-  **EXISTING TRACK**
-  **PROPOSED NEW FOREST OF AE ACCESS**
-  **ENABLING WORKS TRACK**
-  **NEW SITE TRACKS**

Reproduced from Ordnance Survey Digital Map Data © Crown copyright 2015. All rights reserved. Licence number 0100031673

COMMUNITY BENEFITS

RES believes that local communities should benefit directly from hosting wind farms in their area.

RES offers a community benefit package totalling £5,000 per installed MW. This is broken down to £3,000 per installed MW for the Local Electricity Discount Scheme (LEDS) funding and £2,000 per MW towards a Community Benefit Fund.

COMMUNITY BENEFIT FUND

The Community Benefit Fund will be £50,000 per annum for the 25 years that the wind farm will be operational.

It is for the community to decide how this fund is managed and spent. We will be working with the local community councils and the Johnstonebridge Centre and Community Development Trust over the coming months to establish this fund.



Bridekirk Friendship Group Lunch Club received funding from RES' Tallentire Wind Farm in Cumbria



Children at the opening of RES' Kelburn Wind Farm, North Ayrshire

LOCAL ELECTRICITY DISCOUNT SCHEME (LEDS)

In addition to the Community Benefit Fund, RES also provides £3,000 per MW of installed capacity for a Local Electricity Discount Scheme (LEDS).



RES will launch LEDS for Minnygap Wind Farm in early 2016. The scheme will offer an annual discount to those properties closest to the wind farm. The scheme is open to all residential, business and community buildings (including schools, places of worship and village halls) within the area of benefit.

Eligible properties will be written to at the time of launch to advise them that they are entitled to a discount of £200 off their electricity bill for the operational lifetime of the wind farm, with the discount being paid directly to the electricity supplier.

More information on LEDS will be sent out to eligible properties in early 2016. Further information on LEDS is also available at www.res-ltd.com

CONSTRUCTION MILESTONES

October - December

Upgrading of the existing forest track, formation of new access track and associated felling

March/April

Start of turbine foundations work

August

Turbines delivered to site

Early 2017

Generation of renewable energy

2015

2016

2017

January - July

Control building, site track and substation construction

July

Grid and Substation work begins

September

Turbine installation and commissioning underway